

THE "YPSI-DOODLER"

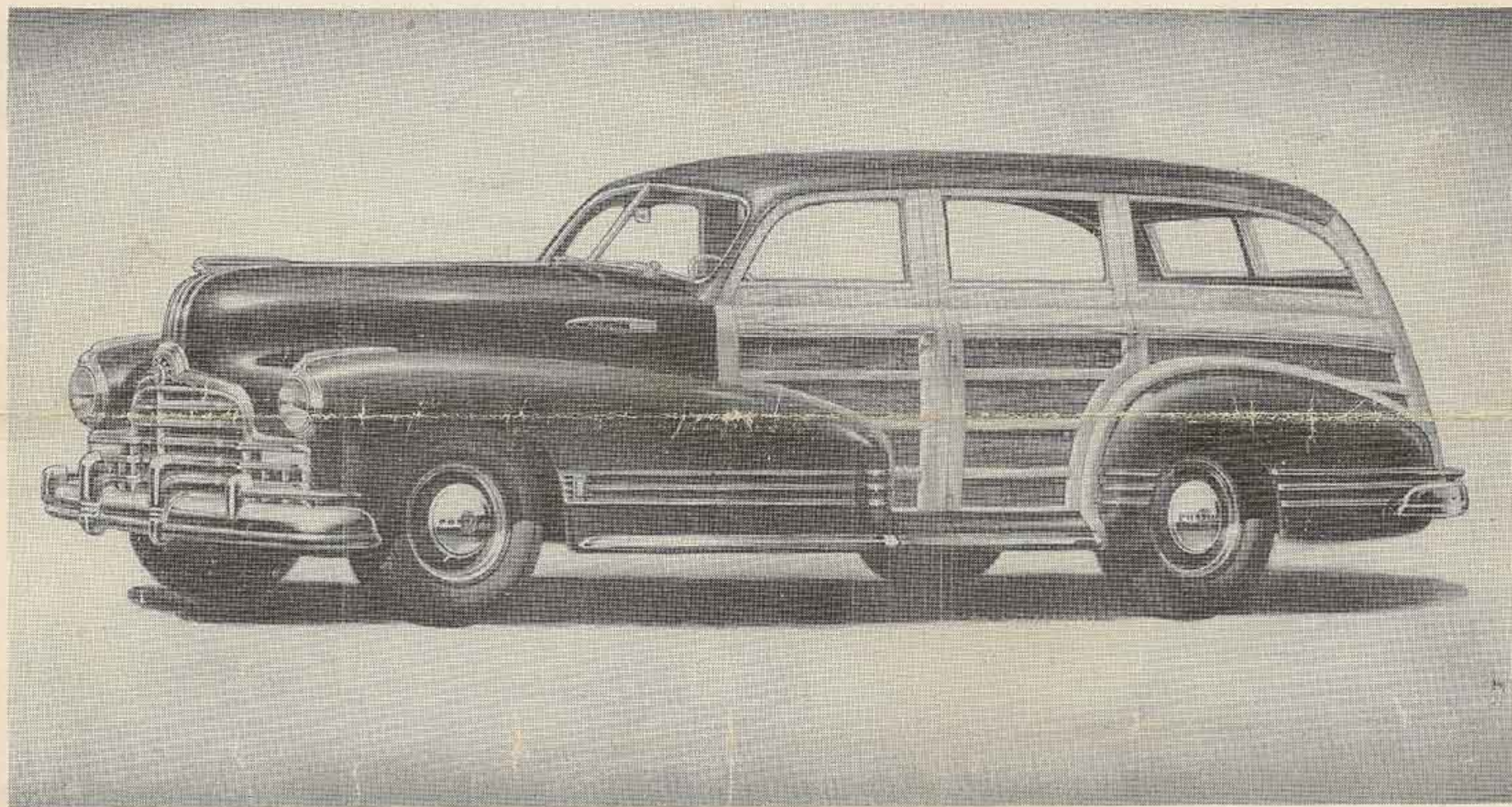
PUBLISHED THE FIRST FRIDAY IN EVERY
MONTH BY AND FOR EMPLOYEES OF THE
YPSILANTI REED FURNITURE COMPANY

VOLUME 2

IONIA, MICHIGAN, NOVEMBER 2, 1945

NUMBER 11

NEW STATION WAGON NOW ON DISPLAY



The first public showing of the 1946 Pontiac cars was held in the right hand wing, ground floor, of the General Motors Building in Detroit from October 1st. to October 6th. In the next 90 days the same showing is planned for 40 of America's largest metropolitan areas. Included in the showing was the new Pontiac station wagon, equipped with the "Ionia Body" manufactured in our plant.

This Pontiac Station Wagon proved to be one of the biggest centers of attraction of the entire show, and it occupied the biggest and most important place and location. This reception by the public proves that the station wagon type of vehicle was just beginning to come into real popularity at the beginning of the war. The station wagon is being given more consideration now than ever before in the plans of the leading car manufacturers, as it is realized what a big potential market there will be for this type of

vehicle, now that production of passenger units of all types, is being resumed again.

The station wagon body differs considerably from other car models in appearance, construction and purpose. It is a combination passenger car and utility unit. The usual design includes a front, center, and rear seat assembly running across the body to accommodate eight passengers. This arrangement is for passenger transportation.

The center and rear seat assemblies are removable, and when either or both seats are removed, this space can be used for hauling of merchandise, farm products, etc.

The Ypsilanti "Ionia" station wagon body is constructed of seasoned wood and plywood paneling. The wood parts have a finish enhanced by a number of coats of clear varnish.

THE "YPSI-DOODLER"

Published on the first Friday of each month by the employees of Ypsilanti Reed Furniture Company, Ionia, Michigan

Editor-in-Chief Ardith Harris
Assistant Editor Dorothy L. Glasson
Society Editor Letha Candiff
Asst. Society Editor . . . Katherine Lincoln
Sports Editor Mike Wizorek
Staff Photographer Aileen Walsh
Circulation Manager . . . Gladys D. Smith

YPSI CRIBBAGE TOURNAMENT



Shown in the accompanying photograph are a few Ypsi-Reeders brushing up on their Cribbage playing for the forthcoming Tournament. Left to right: Claude McCaul, Wes Sprague, John Crisman, Gerard Perry and Lawrence Myers.

The Tournament, first promoted as a Union social activity, Union members turned it into an all employee stag event. There will be 12 series of games, to take place on Monday evenings throughout the winter. It is to be conducted as a progressive game changing partners at the end of each game. There will be high score and consolation prizes for each evening and as incentive for the entire series a high and consolation prize will be given out at a purely social event to be staged at the end of the season. The Union is donating the use of their hall for these parties. An entrance fee of \$1.00 per evening will be paid by each contestant, this entrance fee to be used for prize money. There will be no registration fee. Entrance fees will be paid the evening of the games. Lloyd Basom will act as clerk of this tournament. The first session of this series took place at 7:30 at the Union Hall, Monday, October 22.

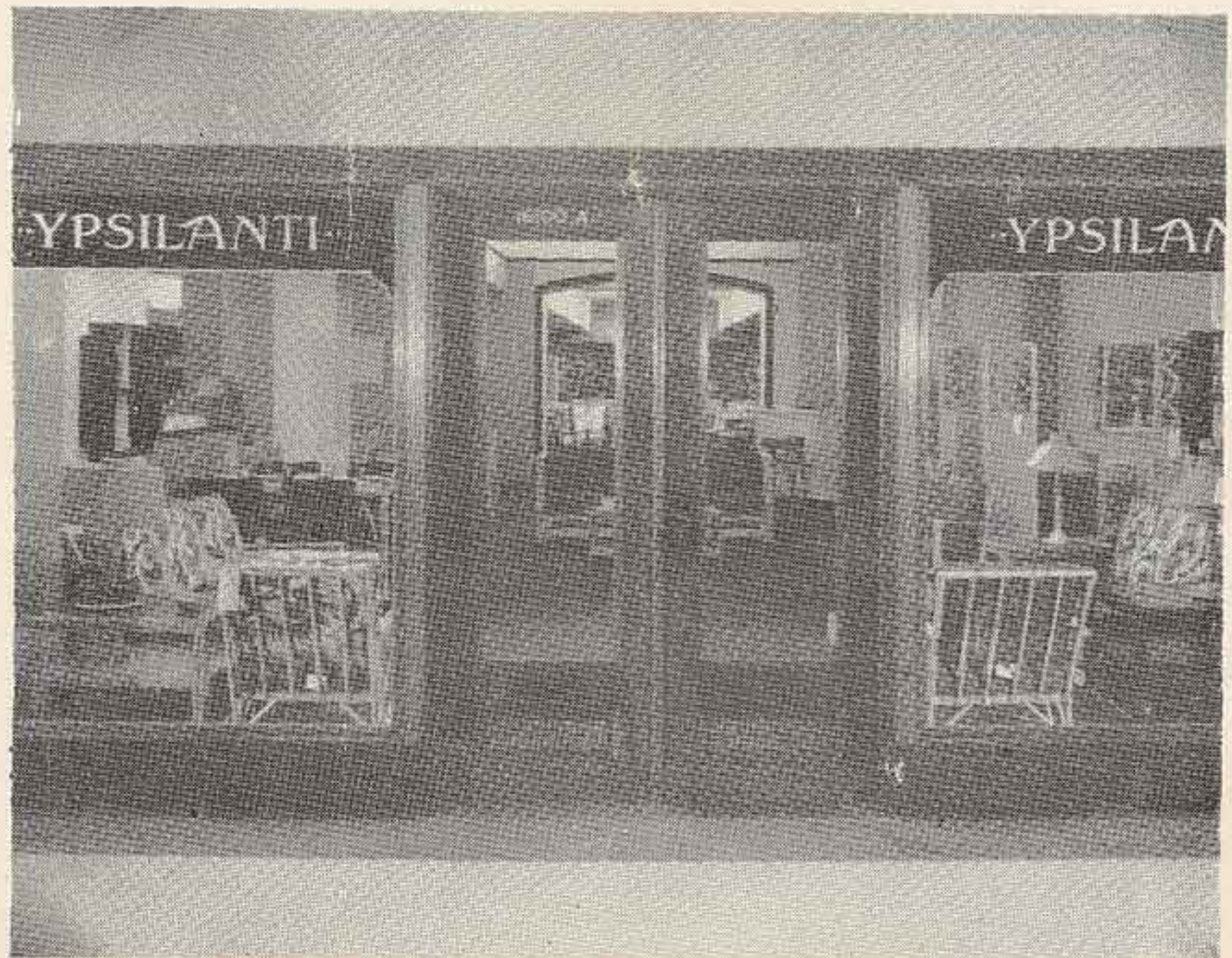
Thanks To Ypsi-Reed Management

At the regular meeting of the U.F.W.A.-C.I.O. Local No. 420 it was decided that a vote of thanks was due the management for broadcasting the World Series games. All members of the Union wish to take this opportunity to extend their sincere thanks for management's thoughtfulness in giving them these daily reports.

Entrance To Ypsilanti's Chicago Showroom

This photograph shows the entrance to the "most important" furniture display space in the Merchandise Mart.

It is important to us as the location where we will introduce our new 1946 line of furniture. With the help of everyone in our organization we can make it the "most important" space to every dealer, furniture buyer and decorator in the furniture industry!





OVENS NOW COMPLETED FOR PRODUCTION

Few people realize how much heat is required in the manufacture of station wagon bodies. We have three drying rooms for use on these bodies, one of which is 416 ft. long, one is 328 ft. long, and the other is 75 ft. long. Each body makes several trips through these ovens.

Besides the several hundred oven panels required in the construction of these ovens, approximately two miles of angle iron and 29,000 bolts were used.

A great deal of work and material has gone into the building of the ovens, and the conveyor track which carries

the station wagon body from and to the various fixtures and assembly stations. Ten motorized conveyors, varying in length from 120 ft. to 428 ft., or an aggregate total of 3000 feet, are required in the station wagon body set-up. 82,000 lbs. of steel channel went into the making of these conveyors, as well as 6000 feet of conveyor chain for moving bodies along the assembly lines, through drying ovens, spray booths, etc.

The accompanying photographs show the work in progress on the dry rooms and conveyors. Shown putting up ovens are, left to right, Herman

Myers, Homer Kennedy, John Ball, and Sam Ostrander. The other photo pictures a group of men laying conveyor track inside an oven, and includes the following: standing, left to right, John Hopkins, Mike Krywanski, and Joe Faschey. Front, left to right, Lial Losey, Lawrence Kane, Frank Krywanski, Lorenzo Zantu, and Tom Lehman.

SOLICITATION FUND

Throughout the year employees are asked to contribute to drives of various kinds all of which are commendable or solicitations would not be allowed either by the Union or the Company. A program has been arranged whereby we believe it is possible to make our allotted payments for these worthy purposes without the necessity of a personal approach. The plan is this. One week during each month you can buy from your foreman or steward a card bearing a number and reading "contribution for Ypsilanti Reed Solicitation Fund". A drawing will be held at the Plant Protection Office, duplicate number being held by employees. The lucky number to receive an appropriate prize. All money received except the amount necessary to pay for the prize will be placed in the fund for authorized solicitations. This plan has the approval of your Executive Committee of the Union and the Management.

REPORT ON RECONVERSION

The plant looks entirely different these days than it did four months ago. The old wood bending room, first floor, has been converted to include the tool room and stamping department. The basement will be the welding department and metal assembly.

The fourth and fifth floors for the entire length of the main building will be taken up by station wagon body manufacturing. Furniture finishing and upholstery will be done on the third floor; and finishing and trimming of all seats, cutting and sewing of all furniture seat covers will take up the second floor. This includes the regular transportation seating as well as the station wagon seats, which will be made in our plant. The mill room has been moved from the fifth floor to the basement, with the rough mill being placed on the first floor near the dry kilns. We also have built a new dry kiln, which will greatly increase our capacity for drying lumber, etc. Paint storage is being moved to the warehouse at the extreme west end of the building. The store room for all furniture upholstery, leatherette, and leather for transportation seating will occupy the east section of the basement.

SPORTS

By MIKE WIZOREK

BASEBALL PLAYERS FETED

On October 20th as a fitting ending to a successful season of baseball, a dinner and an evening of enjoyment was held at the Hunting and Fishing Lodge at Bertha Brock Park. This event was staged in appreciation of the splendid work performed by the boys on our baseball team,—the boys won fourteen games and lost nine.

Sixty guests were invited and all enjoyed a chicken dinner. There were several informal talks and Leon Lockwood, Sr., served as Toastmaster.

Those who played on the team were, Ken Johnson, Dale Johnson, Dick Warden, Clinton Kline, Dick Heufelder, Bill Heufelder, Jim Miller, Dexter Pottruff, Gene VanVleck, Carl Haskins, Clayton Nolan and Dick Dingman. Eddie Renucci, Gerald Wizorek, Ike Dye and Lyle North, who are now in service, were on the team before entering service. Mike Wizorek was umpire, Violet Chance, official scorekeeper and Ivan Chance, Manager.



"Like father—like son" so the saying goes. Shown in the accompanying photograph above is Paul Warden whose average for the first month of bowling is 162 and Dick, his son, who has an average for the same period of 161. Paul is shown giving Dick a few pointers on "how he does it" but from the

way they have been knocking 'em down at the alleys, it is our opinion—pointers aren't needed.

* *

Ardith Harris who bowls with the Gremlins on the Friday night league rolled a 175 game the third night of bowling. This is the high game so far for the four women's teams at Ypsi-Reed.

* *

Glenn Hickok of Process Engineering recently returned from a pheasant hunting trip to South Dakota. Glenn reports hunting was very good and to prove it he brought home twenty-five pheasants.

* *

Shown in the accompanying photograph are Claude and Elizabeth Stowe comparing notes on their recent bowling scores. Elizabeth boasts an average of 140—Claude 129. Elizabeth was overheard giving Claude a few instructions on how to get his average up there too. Claude has worked for the past few years in the Accounting Department and Elizabeth is a former employee of the Tarp Department.



. . . SOCIAL NOTES . . .

We certainly have one lucky fellow among our hunters. At the Hunting and Fishing Club party, Lyle Ball, won a door prize—a box of shot gun shells. Now, Lyle, let's see you get the birds.

* *

With the Cartridge Bag Department working it seems grand to see so many familiar faces again in our Ypsi-Reed family.

* *

Glenn Miller, John Hopkins, and Ralph Blesing were the winners of the first night of play in the cribbage tournament. Glenn and John won the first and second prizes, and Ralph managed to win two games to win the consolation prize.

Harry Hazzard, who until a few weeks ago worked in Process Engineering and is now attending Michigan State College, through his honesty brightened a World War II veterans' future considerably. Herman Struck, Eaton Rapids, who was separated from service slightly over two weeks ago lost his wallet, containing \$110.00 and personal papers, on the Michigan State College Campus. He was notified by the E. Lansing police that his purse had been found by Harry Hazzard. After he reclaimed his purse he left the police station in search of Hazzard to reward his honesty.

Tress O'Donnell, our genial switch-board operator, is enjoying a two weeks' vacation at home. Tress is looking forward to having her two sons in service home very soon now.

* *

Mr. and Mrs. Thomas Ross and family have requested us to express their deep appreciation to all their friends here for the flowers and collection received at the time of their recent bereavement.

* *

Mabel Hinds, R. N. is "pinch-hitting" for Mrs. Maren Brock, R. N. in the First Aid Department. Mrs. Brock is spending a two weeks vacation touring Michigan with her family.

SOFT BALL DINNER PICTURES

On Sept. 28th the softball players held their dinner at the Hunting and Fishing Lodge at Bertha Brock Park. Shown in the insertion at right from left to right are, Les Shellenbarger, Leon Pierce, Van Dye, Tom Minard, Carl Kline, Larry Reister, Ivan Chance, Walter Murphy.

All lined up for their chow and apparently most anxious to get started on theirs are Walter Murphy and Hugh Hartley. We'll just let you pick the rest of 'em out.



★ ★ SERVICE PARADE ★ ★

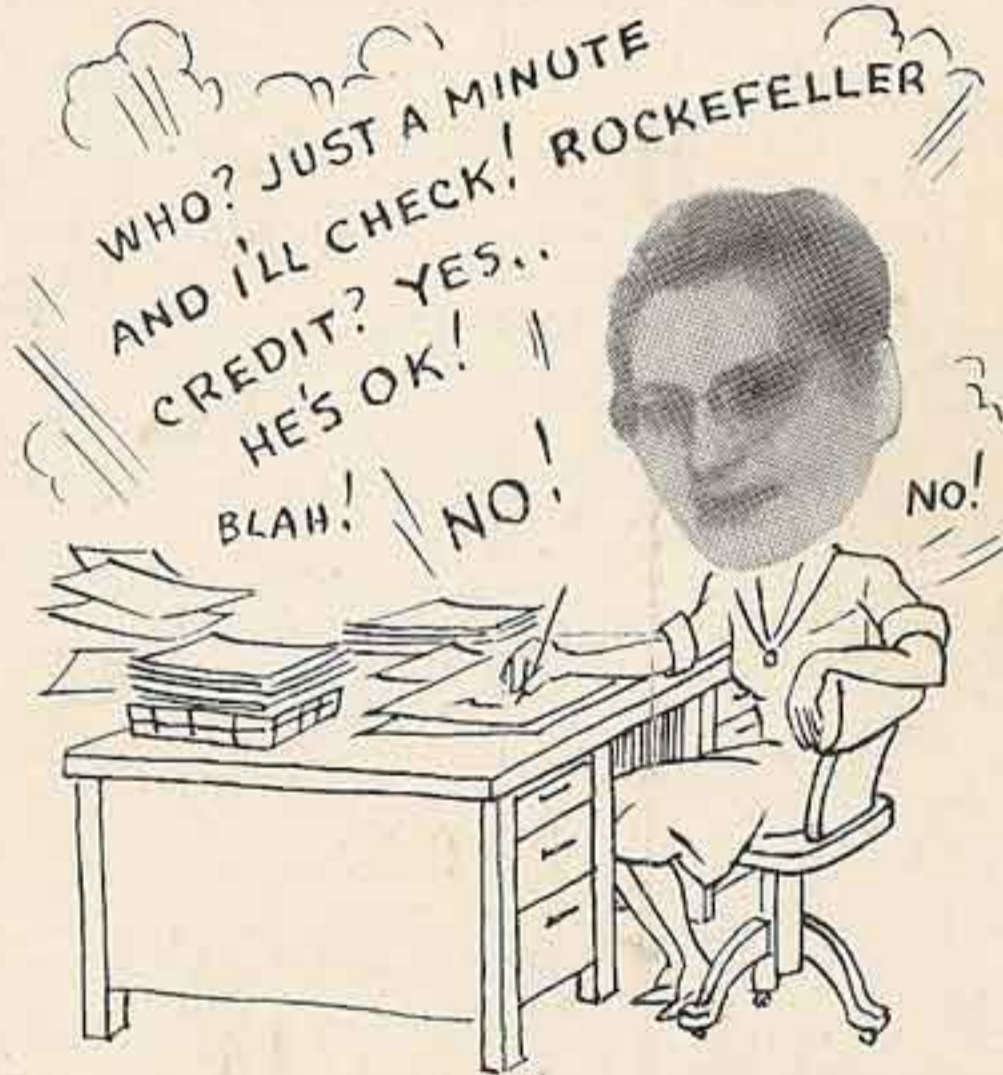


YPSI-REEDERS YOU SHOULD KNOW

Nell Brown

Nell Brown has worked at Ypsi-Reed for the past "umpteens" years in the credit department and we give you herewith a thumbnail sketch of her work and pastimes.

Nell has recently taken up writing of poetry. If you are in need of a nice poem for someone special, contact Nell.



One hundred and eighty-seven of the Ypsi-Reed's male employees answered their country's call in World War II. Now the war is over and these men are being returned to their homes. Many are coming back to Ypsi-Reed. Ypsi-Reed wants and welcomes all these men back to work. All service men who worked here before going into service have been promised and will get their jobs back as quickly as possible. Many have already expressed their desire to return. A few of those who have again joined the Ypsi-Reed family are pictured here.

Top row, left to right, Leon Kuhtz, Vernon Vogt, Frank Maynard, and John Jenks. Bottom row, left to right, Frank Banhagel, John Smejkal, and Alton Perry. Joseph Krueger is another war veteran who has returned to work at Ypsilanti Reed, but he was not present the day the pictures were taken. Robert Brandyberry and Glenn Harris, also returned veterans, are now working in the Material Control Department.